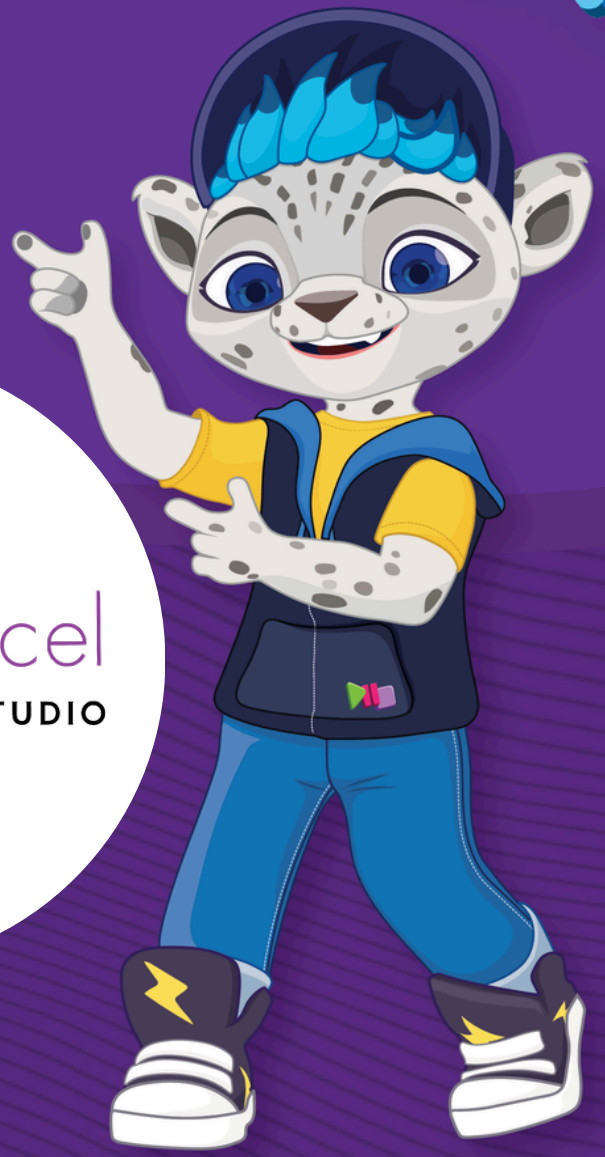


WE ARE AN **OFFICIAL** LOCATION FOR

**READY
SET
DANCE**®



INFORMATION PACK 2025

WE ARE AN **OFFICIAL** LOCATION FOR

BALGOWLAH, NSW



INFOMATION PACK 2025

STUDIO INFORMATION



WELCOME TO DANCEXCEL PERFORMANCE STUDIO

Thank you for choosing Danceexcel Performance Studio for your child's dance education. This info pack provides essential details about our studio and the Ready Set Dance program. From fees, term dates, policies and FAQ, it's all in here!

Ready Set Dance classes are offered in the mornings on Monday, Thursday and Saturdays and are designed to keep children stimulated, fit and most importantly, ensure they have lots of fun!

OFFICE HOURS: [9:00am - 6:00pm \(Monday - Friday\)](#)

STUDIO HOURS: [4:00pm - 8:00pm \(Monday - Friday\)](#), [9:00am - 5:00pm \(Saturday\)](#)

PHONE NUMBERS: [0418 602 461](#)

EMAIL: CATHERINE@DANCEXCEL.COM.AU

STUDIO LOCATION: [360 SYDNEY ROAD, BALGOWLAH NSW 2093 \(Entry via Totem Lane\)](#)

WEBSITE : WWW.DANCEXCEL.COM.AU

Information about the studio is available on the above web address. Periodic newsletters will be sent out by email and we also have a private facebook group for Ready Set Dance Parents where we share information and class photos/videos! Once enrolled you will be given access to your own Parent Portal where you can manage your account, add classes and pay your account from a computer or smart phone.

We hope you find this information pack helpful. If you have any questions or need further assistance, please don't hesitate to contact us. We look forward to sharing the joy of dance with your child and your family!

TIMETABLE



SATURDAY

9:00am - 9:45am	Ready Set Dance Level 1
9:30am - 10:30am	Ready Set Dance Level 2 - School in 2028
9:30am - 10:30am	Ready Set Dance Level 2 - School in 2027



OUR PROGRAMS



READY SET DANCE is a combo class of JAZZ, TAP, HIP HOP, SINGING and MUSIC. Designed for both boys and girls, the program focuses on teaching the fundamentals of dance while developing confidence, coordination and creativity in a professional and safe environment.

JAZZ

Develop muscle strength, control and balance and achieve coordination milestones like skipping before going to school.

HIP HOP

Bust out some ice cold moves just like FREEZE to our original hip hop tracks.

MUSIC

Develop the musical ear, dynamics and tempo while having fun with instruments and the parachute.

SINGING

Sing like TWIRL and build confidence singing on the microphone.

TAP

Learn the fundamentals of tap in a playful and creative way splashing in puddles and shuffling like a penguin.



★ CONFIDENCE ★

Regular and sustained participation in Ready Set Dance classes helps children to develop their confidence as they try new things, practice and consolidate existing skills and experience success and mastery.



👟 COORDINATION 👟

The carefully sequenced and playful program develops physical coordination, the coordination of the senses, the coordination of the mental processes and language and the coordination of social connections.

🌈 CREATIVITY 🌈

Children are encouraged to use their imaginations to think divergently and to explore their own creative responses to the invitations within dance, music & drama.



FEES & UNIFORMS



PRICES

Ready Set Dance Class	\$185 per student per term
Annual Enrolment Fee	\$55 per student per annum

Please Note: All prices are inclusive of GST and classes are invoiced by the Term

UNIFORM

All Ready Set Dance, students will be required to wear the official uniform that we are sure you will love. Below are the following options that can be purchased at reception.



TUTU FRILL DRESS



CROSS OVER



T SHIRT



SHORTS



JACKET



HAIR ACCESSORIES



BIKETARD

FAQ'S



Can I watch my child's classes?

In our experience preschoolers are able to concentrate better without the distraction of other noise in the room from parents and other siblings. Our program has been endorsed by leading child care experts who support the independent learning model. As preschoolers participate in classes they have the opportunity to develop additional secure attachments with adults (teachers) and peers. This helps them transition positively into the larger world and helps with school readiness.

Having said that, a lot of children are timid at first and need to know that a parent is close by. Our program allows parents to watch the first class if necessary to help them adjust.

Are your teacher's qualified?

All teachers have their Working with Children Check (or equivalent) and follow the program that is endorsed by early learning experts. Ready Set Dance teachers are required to gain their certification from Ready Set Dance head office before delivering the program.

Do we need to purchase uniform and shoes?

Students must wear the Ready Set Dance uniform. However, we need to make sure we are the right fit for you and your child before committing to anything. Comfortable clothes and sneakers are fine for the first couple of lessons. Once your child has settled you can purchase the official Ready Set Dance uniform at reception which we are sure you will love.

What is watching day?

Watching day is where parents get to view their child dance as an audience in the classroom. It's a chance for your child to begin their first step to working on their performance skills.

If we miss a class can it be made up on another day of the week?

You may swap days during Terms 1, 2 and 3 if you miss a class (as long as the make up class is not full). In term 4, each class works on a different routine for the end-of-year concert, and it is too confusing for students to be swapping days. We do recommend that you avoid alternating days too much as preschoolers need the comfort of knowing that the same teacher and their friends will be there when they go to dancing.

How can I experience Ready Set Dance at home?

Ready Set Dance airs on Nick Jr and Paramount Plus. You can also catch us on YouTube and the Nick Jr Play App. The Show has been so popular that it is now airing in 120 countries all over the world. Preschoolers love to dance along to their favourite songs from the TV show in their classes every week.

IMPORTANT INFORMATION



About Dancexcel Performance Studio

Dancexcel is a well-established Sydney dance studio that offers a unique environment for students to develop a passion for dance. We aim to develop confidence, self esteem, a sense of self-discipline and teamwork in a nurturing environment.

We offer classes for children aged from 3 to young adult and to all levels from beginners to experienced dancers. Class numbers are strictly limited to ensure personal attention. All our teachers are highly professional and experienced with a talent for working with children and teenagers.

Dancexcel is owned and operated by Catherine Edwards. Catherine has over 20 years of teaching and performance experience in the dance industry. Catherine was trained in Sydney in Classical (RAD), Jazz and Tap. Catherine has a Bachelor of Applied Science (Physiotherapy), Certificate IV in Dance Teaching and Management and Certificate IV in Business as well as extensive experience in The Pilates method.

Registration Opens: 31 March 2025

TERM DATES

Term 2: Monday 28 April to Saturday 28 June

Term 3: Monday 21 July to Saturday 27 September

Term 4: Monday 13 October to Saturday 13 December

FULL FEES must be paid by:

Term 2: Saturday 10 May 2025

Term 3: Saturday 2 August 2025

Term 4: Saturday 15 October 2025

Concert and Performance: Sunday 7 December 2025

Christmas Party: Saturday 13 December 2025



For more details or questions about these dates, please contact us.

We're excited for a great dance year at Dancexcel Performance Studio!

STUDIO POLICIES



Procedures for Drop Off/Pick Up Zone in Totem Lane

- Drop Off - aim to 5 to 10 minutes before lesson start time.
- Pick Up - aim to pick up 5 to 10 minutes after lesson finish time.
- Please do not block the traffic or double park in Totem Lane
- Avoid queuing in the lane - please circle the block if your child is not waiting at pick up.
- Please obey all traffic signs
- Drive slowly and be aware that there are children about

Note: Drop off and pick up will not be available for Ready Set Dance students and it is preferred that Primary students are collected on foot.

Active and Creative Kids Vouchers

Dancexcel is a registered provider with Service NSW for Active and Creative Kids Vouchers. Vouchers need to be emailed to Dancexcel within the first week of each term to be applied to that term's fees. Any vouchers received after the first week of term will be applied to the next terms fees. Only one voucher may be used per term per student. Each voucher may only be redeemed once per annum.

Annual Performance

All students work towards a performance that will be held in November or December. The concert is an exciting time for all students as they experience costumes, hair, makeup, backstage and most of all being on the stage. It gives students a goal to work towards each year. Although it is not compulsory, all students are encouraged to participate. Routines are learnt during normal class time with an extra rehearsal held close to the performance date. A concert levy of \$85 per family will be charged to Term 4 fees. The levy will cover the following: digital video links to all concert performances, access to all photographs - stage shots and headshots, and backstage staff costs.



FEE POLICIES



Important Information

Fees are calculated on a yearly basis and then divided into 4 equal payments. Therefore, whether it is a long or short term, fees remain the same per term. For new students starting part way into a term, fees are calculated on a pro-rata basis. All existing students are required to pay for the full term, even if they have an extended absence due to vacation. Extended absences due to illness/injury will be considered on an individual basis.

Payment Terms

All deposits & fees are strictly payable in advance by cash, cheque or direct deposit and are non-refundable and non-transferable. If fees remain outstanding after the payment due date (the first Saturday of each term), an administration fee will be charged per account issued. Unless prior arrangements have been made with the principal, continued non-payment of fees will result in students being refused entry to classes.

Changes to Enrolment and Notice of Discontinuation

Enrolment is on an annual basis. Notice of discontinuation or changes to enrolment must be made in writing prior to the end of the current term. If notice is given after this time, students will be liable for the subsequent term's fees.



